

M.S. All-District Sight Reading Examples

2018

Soprano - Example 1

Soprano

A single staff of music in 4/4 time, written for Soprano. The key signature has two flats (Bb and Eb). The melody consists of quarter notes: G4 (first measure), A4 (second measure), Bb4 (third measure), C5 (fourth measure), D5 (fifth measure), E5 (sixth measure), F5 (seventh measure), G5 (eighth measure), F5 (ninth measure), E5 (tenth measure), D5 (eleventh measure), C5 (twelfth measure), Bb4 (thirteenth measure), A4 (fourteenth measure), G4 (fifteenth measure). The piece concludes with a double bar line.

Soprano - Example 2

Soprano

The musical notation is written on a single staff in 4/4 time with a key signature of one flat (Bb). The melody consists of quarter and eighth notes, with some beamed eighth notes and a fermata over a quarter note.

Alto - Example 1

Alto

The musical notation is written on a single staff in treble clef with a 4/4 time signature. The melody begins with a half rest on the first beat, followed by a quarter note G4 on the second beat, a quarter note A4 on the third beat, and a quarter note B4 on the fourth beat. The second measure contains a quarter note C5 on the first beat, a quarter note D5 on the second beat, a quarter note E5 on the third beat, and a quarter note F5 on the fourth beat. The third measure starts with a quarter note G5 on the first beat, followed by a quarter rest on the second beat, a quarter note A5 on the third beat, and a quarter note B5 on the fourth beat. The fourth measure begins with a quarter note C6 on the first beat, a quarter note D6 on the second beat, a quarter note E6 on the third beat, and a quarter note F6 on the fourth beat. The fifth measure consists of a quarter note G6 on the first beat, a quarter note A6 on the second beat, a quarter note B6 on the third beat, and a quarter note C7 on the fourth beat. The sixth measure features a quarter note D7 on the first beat, a quarter note E7 on the second beat, a quarter note F7 on the third beat, and a quarter note G7 on the fourth beat. The seventh measure has a quarter note A7 on the first beat, a quarter note B7 on the second beat, a quarter note C8 on the third beat, and a quarter note D8 on the fourth beat. The eighth measure contains a quarter note E8 on the first beat, a quarter note F8 on the second beat, a quarter note G8 on the third beat, and a quarter note A8 on the fourth beat. The piece concludes with a half rest on the first beat of the final measure, followed by a quarter note B8 on the second beat, a quarter note C9 on the third beat, and a quarter note D9 on the fourth beat.

Alto - Example 2

Alto

A musical staff for the Alto voice part, written in 4/4 time. The key signature is one flat (Bb). The notation consists of 13 measures. The first measure begins with a treble clef and a key signature change to one flat. The melody starts on a half note G4, followed by quarter notes F4, E4, and D4. The second measure continues with quarter notes C4, B3, and A3. The third measure has a whole note G3. The fourth measure has a whole note F3. The fifth measure has a whole note E3. The sixth measure has a whole note D3. The seventh measure has a whole note C3. The eighth measure has a whole note B2. The ninth measure has a whole note A2. The tenth measure has a whole note G2. The eleventh measure has a whole note F2. The twelfth measure has a whole note E2. The thirteenth measure has a whole note D2. The piece ends with a double bar line.

4/4

G4
F4
E4
D4
C4
B3
A3
G3
F3
E3
D3
C3
B2
A2
G2
F2
E2
D2

Tenor - Example 1

Tenor

8

Tenor - Example 1

Tenor

The musical notation is written on a single staff in bass clef, 4/4 time, with a key signature of one flat (Bb). The melody consists of quarter notes and eighth notes, with a double bar line and repeat sign in the middle.

Tenor - Example 2

Tenor

A musical score for Tenor, Example 2. The score is written on a single staff with a treble clef and a key signature of one flat (Bb). The time signature is 4/4. The music begins with a whole note G4, followed by a quarter note A4, a quarter note Bb4, and a quarter note C5. The next measure contains a quarter note D5, a quarter note E5, and a quarter note F5. The third measure has a quarter note G5, a quarter note F5, and a quarter note E5. The fourth measure consists of a quarter note D5, a quarter note C5, and a quarter note Bb4. The fifth measure is a quarter note A4, followed by a quarter rest, and a quarter note G4. The sixth measure contains a quarter note F5, a quarter note E5, and a quarter note D5. The seventh measure has a quarter note C5, a quarter note Bb4, and a quarter note A4. The eighth measure is a quarter note G4, followed by a quarter note F5, and a quarter note E5. The piece ends with a double bar line.

Tenor - Example 2

Tenor

The musical notation is written on a single staff with a bass clef. The key signature has one flat (B-flat), and the time signature is 4/4. The melody begins with a quarter note on G2, followed by quarter notes on A2, B2, and C3. The next measure contains eighth notes: D3, E3, F3, G3, A3, B3, and C4. This is followed by a double bar line and a repeat sign. The melody then continues with quarter notes on B3, A3, G3, and F3, ending with a quarter note on E3.

Bass - Example 1

Bass

The musical notation is written on a single staff in bass clef with a 4/4 time signature. The piece begins with a quarter rest, followed by a quarter note G2, a quarter note F2, and a quarter note E2. The next measure contains a quarter note D2, a quarter note C2, and a quarter note B1. The third measure features a quarter note A1, a quarter note G1, and a quarter note F1. The fourth measure consists of a quarter note E1, a quarter note D1, and a quarter note C1. The fifth measure has a quarter note B1, a quarter note A1, and a quarter note G1. The sixth measure contains a quarter note F1, a quarter note E1, and a quarter note D1. The seventh measure is a quarter note C1, followed by a quarter rest, and then a quarter note B1. The eighth measure has a quarter note A1, a quarter note G1, and a quarter note F1. The ninth measure contains a quarter note E1, a quarter note D1, and a quarter note C1. The tenth measure features a quarter note B1, a quarter note A1, and a quarter note G1. The piece concludes with a quarter note F1, a quarter note E1, and a quarter note D1.

Bass - Example 2

Bass

Musical notation for Bass Example 2, written in 4/4 time. The piece begins with a bass clef and a 4/4 time signature. The first measure contains a half note G2. The second measure contains a quarter note G2, a quarter note A2, and a quarter note B2. The third measure contains a quarter note C3, a quarter note D3, and a quarter note E3. The fourth measure contains a quarter note F3, a quarter note G3, and a quarter note A3. The fifth measure contains a quarter note B3, a quarter note C4, and a quarter note D4. The sixth measure contains a quarter note E4, a quarter note F4, and a quarter note G4. The seventh measure contains a quarter note A4, a quarter note B4, and a quarter note C5. The eighth measure contains a quarter note D5, a quarter note E5, and a quarter note F5. The ninth measure contains a quarter note G5, a quarter note A5, and a quarter note B5. The tenth measure contains a quarter note C6, a quarter note D6, and a quarter note E6. The eleventh measure contains a quarter note F6, a quarter note G6, and a quarter note A6. The twelfth measure contains a quarter note B6, a quarter note C7, and a quarter note D7. The thirteenth measure contains a quarter note E7, a quarter note F7, and a quarter note G7. The fourteenth measure contains a quarter note A7, a quarter note B7, and a quarter note C8. The piece concludes with a double bar line.

H.S All-District Sight Reading Examples

2018

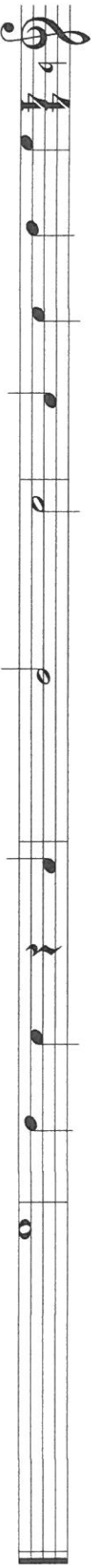
Soprano - Example 1

Soprano

The musical notation is on a single staff with a soprano clef and a 4/4 time signature. The melody consists of the following notes: C4 (quarter), D4 (quarter), E4 (quarter), F4 (quarter), G4 (quarter), A4 (quarter), B4 (quarter), C5 (quarter), B4 (quarter), A4 (quarter), G4 (quarter), F4 (quarter), E4 (quarter), D4 (quarter), C4 (quarter), followed by a quarter rest, then D4 (quarter), E4 (quarter), F4 (quarter), G4 (quarter), A4 (quarter), B4 (quarter), C5 (quarter), and finally a whole note C4. The piece concludes with a double bar line.

Soprano - Example 2

Soprano



Alto - Example 1

Alto

Musical notation for Alto part, Example 1. The notation is on a single staff in 4/4 time, starting with a treble clef. The melody consists of quarter notes: G4, A4, B4, C5, B4, A4, G4, F4, E4, D4, C4. The piece ends with a double bar line.

Alto - Example 2

Alto

A musical staff for Alto in 4/4 time. The melody consists of quarter notes: G4, A4, B4, C5, B4, A4, G4, F4, E4, D4, C4. The piece concludes with a double bar line and a fermata over the final note, C4.

Tenor - Example 1

Tenor

8

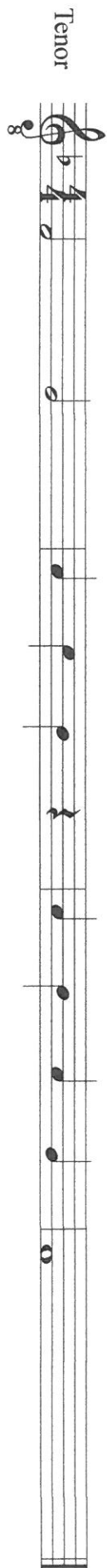
Tenor - Example 1

Tenor

The musical notation is written on a single staff in bass clef. The key signature has one flat (B-flat), and the time signature is 4/4. The melody begins with a whole note B-flat on the first line. This is followed by a sequence of quarter notes: C (first space), D (second line), E (second space), F (third line), G (third space), A (fourth line), and B-flat (fourth space). The piece concludes with a whole note B-flat on the first line.

Tenor - Example 2

Tenor



8

The musical notation is written on a single staff with a treble clef and a key signature of one flat (B-flat). The time signature is 4/4. The piece begins with a piano dynamic marking. The melody consists of the following notes: a half note G4, a half note A4, a quarter note B4, a quarter note C5, a quarter rest, a quarter note B4, a quarter note A4, a quarter note G4, a quarter note F4, a quarter note E4, and a whole note D4. The piece concludes with a double bar line.

Tenor - Example 2

Tenor



Bass - Example 1

Bass

The musical notation is written on a single staff in bass clef with a 4/4 time signature. The melody consists of the following notes: G2 (quarter), A2 (quarter), B2 (quarter), C3 (quarter), D3 (quarter), E3 (quarter), F3 (quarter), G3 (quarter), A3 (quarter), B3 (quarter), C4 (half). A fermata is placed over the C3 note in the third measure.

Bass - Example 2

Bass

The musical notation is written on a single staff in bass clef with a 4/4 time signature. The melody consists of the following notes: a quarter note G2, a quarter note F2, a quarter note E2, a quarter note D2, a half note C2, a quarter note B1, a quarter note A1, a quarter note G1, and a whole note F1.