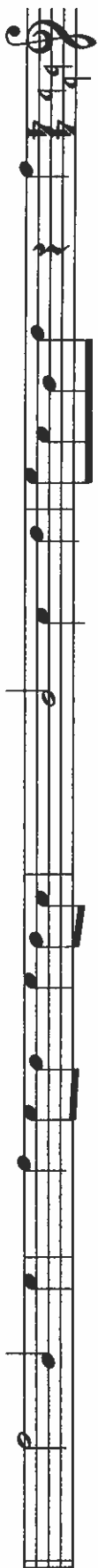


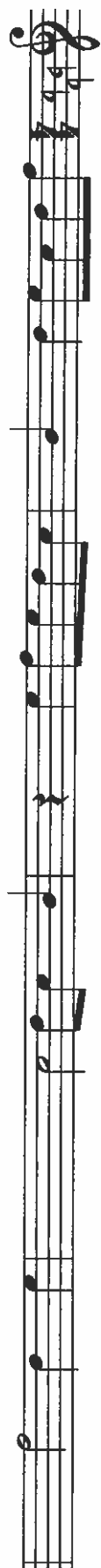
SOPRANO - Example 1

Soprano



SOPRANO - Example 2

Soprano



ALTO - Example 1

Alto

The musical notation is written on a single staff in 4/4 time, starting with a treble clef. The melody consists of quarter and eighth notes, with a fermata over the eighth note in the fifth measure.

ALTO - Example 2

Alto

The musical notation is written on a single staff in treble clef with a 4/4 time signature. The melody consists of quarter notes and eighth notes, with a measure of rest in the middle.

TENOR- Example 1

Tenor

8

TENOR- Example 1

Tenor

TENOR - Example 2

Tenor

8

TENOR - Example 2

Tenor

8

BASS - Example 2

Bass

Musical notation for Bass, Example 2, in 4/4 time. The notation consists of a single staff with a bass clef and a 4/4 time signature. The melody begins on the second space (B) and proceeds with quarter notes: B, C, D, E, F, G, A, B. The next measure contains a dotted quarter note B, followed by an eighth note C, then a quarter note D. The following measure contains a quarter note E, followed by a dotted quarter note F, then an eighth note G. The next measure contains a quarter note A, followed by a dotted quarter note B, then an eighth note C. The following measure contains a quarter note D, followed by a dotted quarter note E, then an eighth note F. The next measure contains a quarter note G, followed by a dotted quarter note A, then an eighth note B. The final measure contains a quarter note C, followed by a dotted quarter note D, then an eighth note E. The piece concludes with a double bar line.